

3 FLOAT SWITCH WIRING DIAGRAM

3 float switch wiring pdf

365 Modular Type Filter Regulators Series AW Filter Regulator Series AW Filter Regulator with Backflow Function Series AW K Mist Separator Regulator Series AWM

Modular Type Filter Regulators Series AW - SMC Pneumatics

The universal design of the PiggyBack Float Switch from Everbilt is compatible with various sump pumps. The perfection solution to replacing the switch for your sump and sewage pumps.

Piggy Back Float Switch for Sump and - The Home Depot

SWITCH ACTION (Normally open/Normally closed) Vertical Models Vertical mount models are shipped with normally open switch contacts which close

DWYER INSTRUMENTS, INC.

As a grower, you're investing in WagNet for one simple reason. You want to improve efficiencies and yields by remotely monitoring and controlling essential devices on your farm.

Wagnet - Redirect

Level Switches LS 600 PNEUMERCATOR Liquid Level Control Systems The LS 600 series liquid level float switches provide the highest degree of dependable accuracy for ...

Level Switches LS 600 - Pneumercator

Green indicator Red indicator 4 3 2 9 1 8 7 6 5 C Modular F.R.L. Units Series AC Bracket with spacer Retainer Bolt Lever pin e Tighten the bolt. Improved installation

Modular/F.R.L. Units - SMC Pneumatics

6 Important Safety Information Throughout this manual, notices appear to bring your attention to situations which could result in death, serious injury, damage to the appliance, or damage to property.

Service Manual - HOSHIZAKI

In electrical engineering, a switch is an electrical component that can "make" or "break" an electrical circuit, interrupting the current or diverting it from one conductor to another.

Switch - Wikipedia

As a grower, you're investing in WagNet for one simple reason. You want to improve efficiencies and yields by remotely monitoring and controlling essential devices on your farm.

Wagnet - News

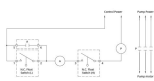
X-1.GemsSensors or mation. ~????? 30° MAX. CONDUIT SILICONE OIL INSTALLATION AND MAINTENANCE Float Type Level Switches Installation and Maintenance

Float Type Level Switches Installation and Maintenance

PIPING 1. Run flexible tubing or pipe from evaporator drain into one of the three pump inlets. Be sure inlet piping is sloped downward to allow gravity flow (Figure 4).

PERSONAL INJURY MIGHT RESULT FROM AN INOPERATIVE OR

Trouble Shooting Fujitsu Trouble Shooting Guide Current Models Wired Remote Control Models Code Consists of Indoor Unit Address Followed by the Fault Code



3 FLOAT SWITCH WIRING DIAGRAM

crowdsale.exmo.me

Fujitsu Trouble Shooting Guide - OrionAir

A wireless light switch is a light switch that commands a light or home appliance to turn itself off or on, instead of interrupting the power line going to the light fixture.

Wireless light switch - Wikipedia

It's pretty standard in boat wiring to bypass the main battery switch for one thing: The boat's bilge pump float switch. This way, even if your battery switch is off, if your boat starts filling with water the pump will still kick on.

How To Wire A Boat - New Wire Marine | Switch Panels

Green indicator Red indicator 4 3 2 9 1 8 7 6 5 S M C Modular F.R.L. Units Series AC Bracket with spacer Retainer Bolt Lever pin e Tighten the bolt. Improved installation

P0295-P0364-E.qxd 08.11.6 2:05 PM Page 295 Modular/F.R.L

3 Lowes.com WARNING • DO NOT work on pump until power is disconnected. • DO NOT cut off ground pin or use an adapter fitting. • DO NOT use an extension cord.

SUMP PUMP - Lowes Holiday

Both the float tank and float room use a magnetic drive centrifugal pump, a filter system, and a UV water purification system. You can choose between the standard filter system with four smaller filters or a single Big Blue brand filter.

Floatingrest International | | Float tanks made in Sweden

90-0115-00 10/97 Fltman.pm65 Power Switch The Power Switch is located on the front panel. This switch controls ON/OFF and RESET for the inverter. Expect a 3

OWNER'S MANUAL FLEET POWER INVERTER/BATTERY CHARGERS - Xantrex

JOHNSON CONTROLS 3 FORM 21.2-CL2 ISSUE DATE: 1/25/21 13. Is a flow switch connected between Terminals 2 and 13 on the User Terminal Block 1TB in the

EQUIPMENT PRE-STARTUP AND STARTUP CHECKLIST

The Series A3000 Photohelic® Switch/Gages function as versatile, highly repeatable pressure switches combined with a precise pressure gage employing the time-proven Magnehelic® gage design.

Series A3000 | Photohelic® Pressure Switch/Gage functions

A Single Battery Tray Two Battery Trays: Note the large red and black wires in both pictures. Those are the battery cables. The red block on the end of the red wire is the boot that covers and protects the Positive battery terminal.

Boat Building Standards | Basic Electricity | Wiring Your Boat

LSIS strives to maximize customers' profit in gratitude of choosing us for your partner.

LSIS XBM-DN16S USER MANUAL Pdf Download.

View and Download BMW 3-series service and repair manual online. BMW 3-series Automobile pdf manual download. Also for: Bmw 5-series, 3 series, E28, E34, E30, 316i ...

BMW 3-SERIES SERVICE AND REPAIR MANUAL Pdf Download.

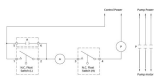
3 Speakers & Radios Speakers 42 Radios 43 Alarms & Starter Switches Low Water Alarm 44 Warning Lights 44 Warning Buzzers 44 Starter Switches 44

catalogue 2016 – Australia – Vdo

Who is online; In total there are 26 users online :: 2 registered, 0 hidden and 24 guests (based on users active over the past 5 minutes) Most users ever online was 138 on Tue Sep 17, 2013 9:56 am

The TugNuts • Home

Part No. 90-0113-00 Fdmman2.p65 2/98 SAFETY SUMMARY General safety information for installation and operation is



3 FLOAT SWITCH WIRING DIAGRAM

crowdsale.exmo.me

contained throughout this manual where it applies and is not included

OWNER'S MANUAL - Xantrex

Our Complete Catalog in Acrobat PDF Files updated on August 14th, 2018

PDF Catalog - allelectronics.com

PL Reference Manual Rev 6.2.0 10.07.08 4 0 3 0.2 Additional Installation Notes Ensure that you have followed the installation instructions on pages 3-5 of the User Guide.

Plasmatronics PL Series

3 Lift stop short of full rise. 1. Low on fluid. 1. Add oil. 2. Suction line too short or has 2. Replace suction line. hole in it.

Rotary Lift

RV GENERATOR TROUBLESHOOTING OVERVIEW HOW DOES MY RV GENERATOR WORK? Note: While this troubleshooting guide is applicable to most makes of RV Gen Sets, there are many specific ref-

RV GENERATOR TROUBLESHOOTING GUIDE

SimpliPhi Lithium Ferro Phosphate (LFP) Deep Cycle Batteries are safer than lead acid batteries with a much longer cycle life.

SimpliPhi Lithium Deep Cycle Batteries | altE

3 Contents CVHE-SVN01C-EN Warnings and Cautions General Information About This Manual Product Description Block Commonly Used Acronyms Unit Nameplate

Installation – General Information Water Cooled CenTraVac

3 Features and Benefits 2 Unit Configurations 4 Model Number Description 7 General Data 9 Application Considerations 11 Selection Procedure 20 Performance Adjustment ...

Outdoor Gas Heating Units and Duct Furnaces MUA-DS-5 and

Public Comment No. 1063-NFPA 70-2015 [Global Input] Article 100 Definitions Voltage, Nominal..... Informational Note No. 3: Certain 48-volt DC battery units have a charging float voltage up to 58 volts.

Public Comment No. 1063-NFPA 70-2015 [Global Input

2 The number designations following the letter indicate the horsepower or cubic inch displacement. The number following the model number is the specification number.

Tecumseh Service Manual for 3 to 11 HP 4-Cycle - Asos1.com

Creating a preferred vendor parts catalog for AutoCAD® Electrical. When you share the vendor catalog (default_cat.mdb) across a network it is normal to experience a slower response time when performing a part number Lookup.